

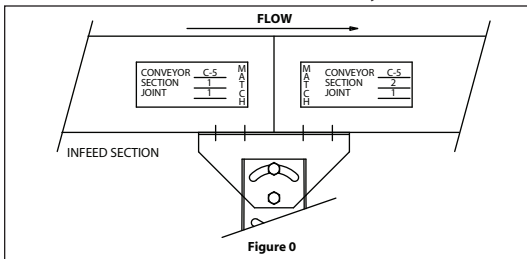
**MODEL "190MRA" MOTORIZED ROLLER ACCUMULATOR LIVE ROLLER CONVEYOR
ASSEMBLY AND OPERATING INSTRUCTIONS**

RECEIVING INSTRUCTIONS

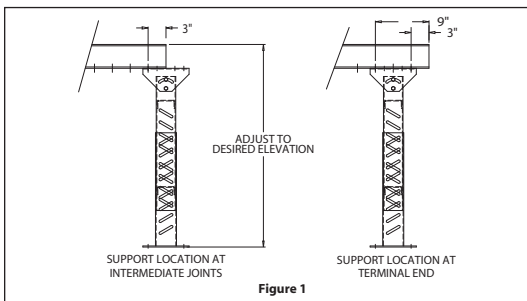
- 1) Prior to uncrating the equipment, check the number of crates, boxes, skids, etc. received against the freight bill to insure that all items shipped are on the job site.
- 2) Check to see that none of the equipment was damaged in transit. If damages occurred, note damages on freight bill and immediately contact the motor carrier and file claim for the damages.
- 3) Transport conveyors on their skids as near the installation site as possible.

INSTALLATION INSTRUCTIONS – MECHANICAL

- 1) Remove conveyor sections from their skids and place in proper sequence based on the match mark identification on the conveyor sections.

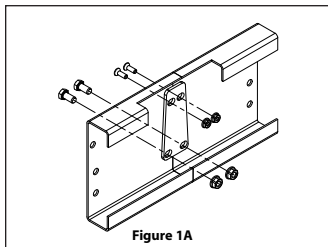


- 2) Beginning with the first section in match sequence, bolt a support at each end, leaving a space for the second bed section on pivot plate. Remember to set stands at proper elevation while section is inverted. (See Figure "1" for support positions). Finger tighten bolts

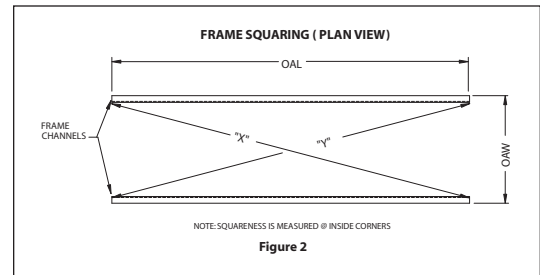


only and carefully turn section over (right side up) and place into position.

- 3) Take the next intermediate section in the match mark sequence and add one stand to far end, bolting on 1/2 of pivot plate. Finger tighten stand bolts, carefully turn right side up and attach end without stand to previous section. Attach splice plate as shown in Figure "1A", to secure both sections together. Repeat this procedure until complete conveyor is assembled.

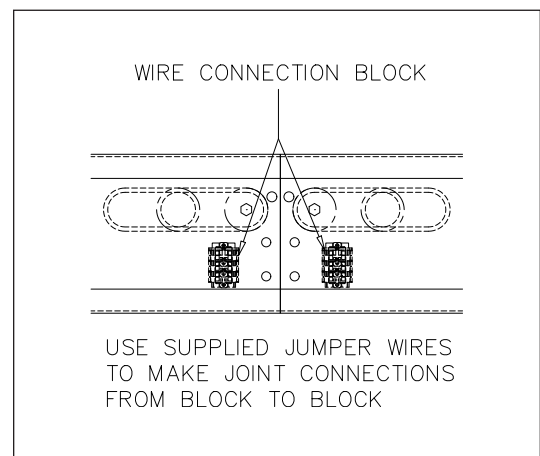


- 4) Do not wrench tighten bolts until unit is assembled, aligned, and lagged to the floor.
- 5) Align Conveyor - To align conveyor, tie a chalk line to the exact center of the pulleys at each end of the conveyor and pull it tight. Take each section of the conveyor starting at one end and align the frames so that the chalk line is in the exact center of each section of the conveyor.
- 6) Square and level conveyors. Check each individual bed section for squareness by measuring diagonally inside corners of frame channels. (See Figure "2") When the "X" and "Y" dimensions are the same, the section is square.



INSTALLATION INSTRUCTIONS – PNEUMATIC & ELECTRICAL

- 1) Electrical connections must be made at each bed joint during field installation. (See Figure below).
- 2) Connect 110V to power supply.



SAFETY INFORMATION

- 1) After completion of conveyor installation and **BEFORE** operation, personnel operating the conveyor must be properly trained in its use. It is recommended these employees be walked through the proper sequence of applying and removing main power, shown where hazardous areas exist along the length of the conveyor (identified by safety labels attached to the conveyor frame and drive guards) and correct loading and unloading methods. Make sure safety labels are legible and that personnel understand their meaning.
- 2) Conveyor should **NEVER** be operated with any of the safety guards removed as physical harm could come to the user. All pinch points of the conveyor are guarded and also identified by safety labels attached in the guarded pinch point area. Instruct users to turn the conveyor off and notify the proper personnel should a guard be missing and the conveyor is running.
- 3) Only qualified maintenance personnel should perform work on the conveyor. Should the unit require maintenance, **disconnect conveyor from power source before attempting to adjust or repair conveyor**. If guards were removed to perform the maintenance task, they **must be replaced** before attempting to operate conveyor. If guards are damaged and become unusable they must be replaced. Locate the conveyor's serial number plate, which is mounted near the motor drive, and contact your ACSI distributor for a replacement. He will need the serial number of the conveyor to secure the correct guard.

