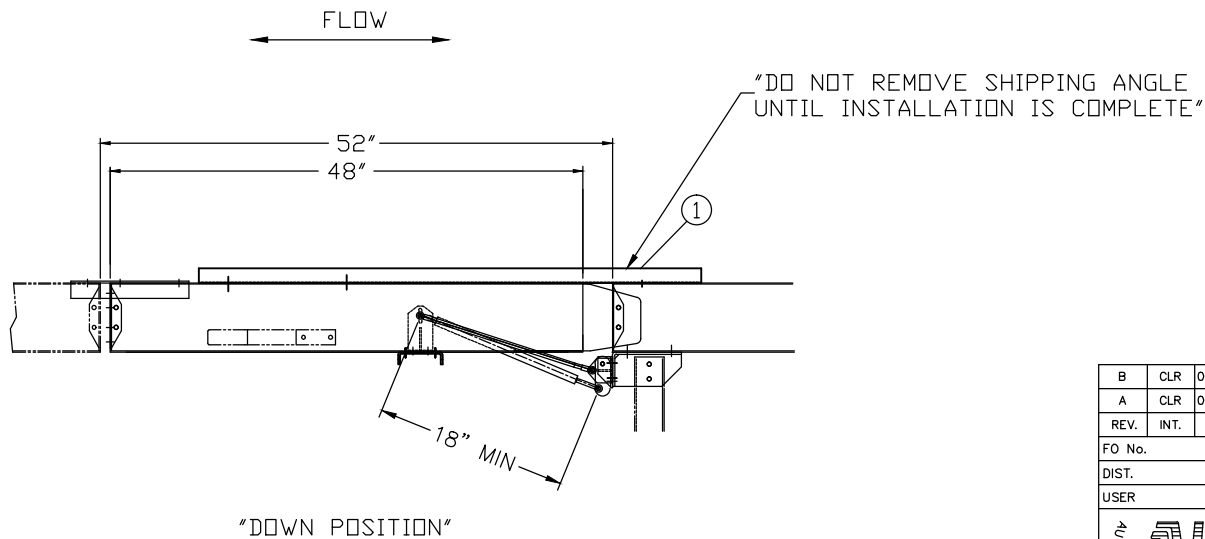
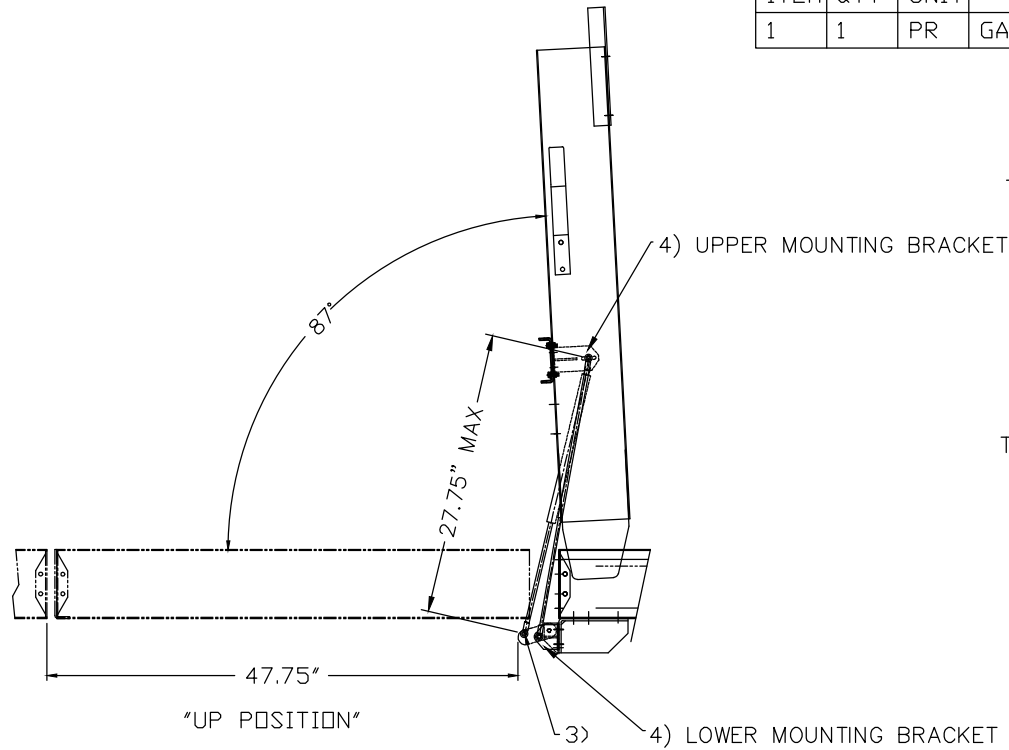



| ITEM | QTY | UNIT | DESCRIPTION | DRAWING |
|------|-----|------|---------------------|----------------|
| 1 | 1 | PR | GATE SHIPPING ANGLE | B06332-00-000H |

GAS SPRING INSTALLATION OR
REPLACEMENT INSTRUCTIONS:

TO REMOVE: 1) GATE TO BE IN OPEN POSITION.
2) USE ASSISTANCE TO HOLD GATE IN POSITION.
3) PULL RETAINING CLIP FROM CYLINDER ENDS.
4) LOOSEN (DO NOT DETACH) UPPER AND LOWER MOUNTING BRACKET SCREWS TO ALLOW FULL EXTENSION OF CYLINDER
5) REMOVE CYLINDER.

TO INSTALL: 6) PRESS END FITTINGS TO BALL STUDS (WITH CYLINDER ROD POINTING TO THE GROUND)
7) INSERT RETAINING CLIPS.
8) CHECK CYLINDER LENGTH IN THE EXTENDED AND COMPRESSED POSITIONS (OPENED AND CLOSED) AND ADJUST ENDS IF NECESSARY (WITH THE HOLES PROVIDED IN THE CYLINDER END MOUNTING BRACKETS) AS NOT TO EXCEED 27.75" MAX LENGTH OR 18" MIN LENGTH. TIGHTEN UPPER AND LOWER MOUNTING BRACKET SCREWS.



| | | | | | | |
|---|------|----------|--|-------------------|-------------------------|---------------------------|
| B | CLR | 09/07/05 | AD'D N/A B06332 | 8406 | | |
| A | CLR | 06/28/05 | RELEASED | 8390 | | |
| REV. | INT. | DATE | CHANGES | ECO# | | |
| FO No. | | | TITLE 190LS/CAP GATE INSTALLATION & GAS SPRING INFORMATION | | | |
| DIST. | | | | | | |
| USER | | | | | | |
|  CONVEYOR SYSTEMS, INC. WEST MEMPHIS, ARKANSAS | | | TOLERANCES: DECIMAL ±0.03125", ANGULAR ±1° UNLESS OTHERWISE SPECIFIED | DATE 02/05/99 | NEXT ASSEMBLY B06332 | |
| | | | DESIGNED BY: | CHECKED BY: DATE | SCALE 22 | DRAWING NUMBER FAD-138 |
| | | | DRAWN BY: C.ROOKS | APPROVED BY: DATE | REV. B | |
| | | | | | | |