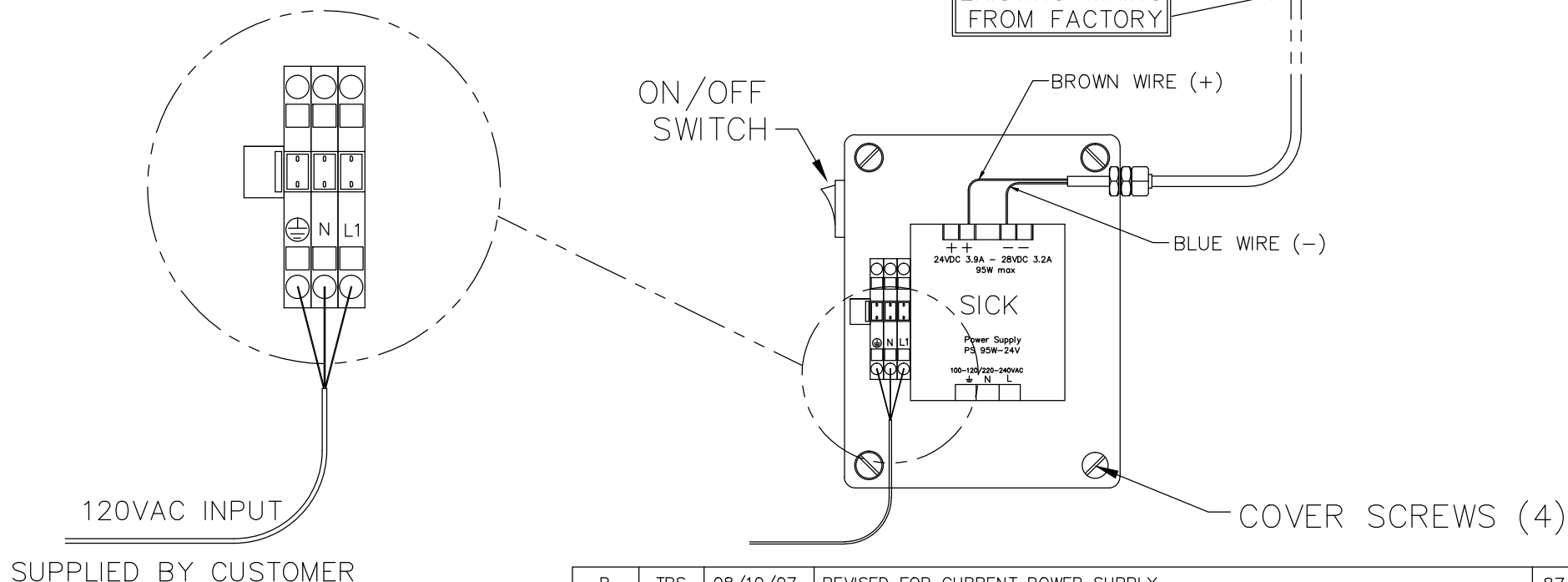



ITEM	QTY.	UNIT	DESCRIPTION	DRAWING
------	------	------	-------------	---------

NOTES:
CUSTOMER TO REMOVE 4 SCREWS
FROM TOP COVER, AND SUPPLY
120 VAC AS SHOWN. REPLACE
TOP COVER, TIGHTEN SCREWS.



B	TRS	08/10/07	REVISED FOR CURRENT POWER SUPPLY		8746			
A	SW	03/26/03	Released					
REV.	INT.	DATE	CHANGES		ECO#			
FO No. FAD			TITLE 190LSE POW SUPPLY(SICK) CUST WIRING INSTRUCTIONS 24-672 (29-063)					
DIST. STANDARD						UNIT		
USER								
<div><div>AUTOMATED</div><div></div><div>CONVEYOR SYSTEMS,INC.</div><div>WEST MEMPHIS, ARKANSAS</div></div>			TOLERANCES: DECIMAL ±0.03125", ANGULAR ±1" UNLESS OTHERWISE SPECIFIED		DATE 08/10/07	NEXT ASSEMBLY		
			DESIGNED BY: S.WARREN		CHECKED BY: DATE	SCALE 1/4"=1"	DRAWING NUMBER	
			DRAWN BY: S.WARREN		APPROVED BY: DATE	REV. B	FAD-122	