

Spring Balanced / Manual Gate

Skatewheel & 1 3/8" Roller

Width - 12", 15", 18" and 24"

Length - 3', 4' and 5' lengths

Wheels/Rollers - Steel or aluminum, skatewheels or rollers

Construction - 2 1/2" x 1" channels - 12 gauge powder painted steel or .125" aluminum

Latching - Safety gate latch

1.9" and 2.0" Roller

Width - 12 widths (13" to 39" BR)*

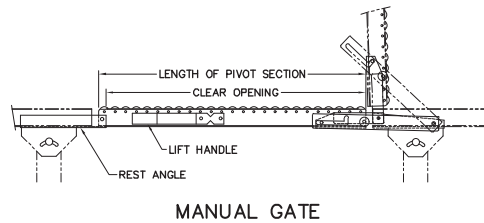
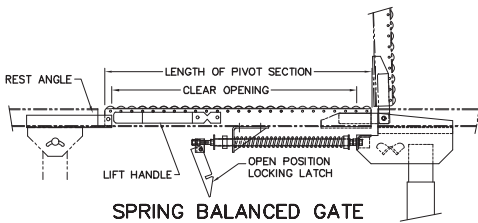
Length - 3' and 4' lengths

Rollers - 1.9" galvanized or 2.0" unplated rollers

Construction - 10 gauge powder painted steel channels - 3 1/2" x 1 1/2" (set high) or 4 1/2" x 1 1/2" (set low)

Latching - Safety gate latch

***NOTE:** Maximum width and length determined by roller centers and type of roller. Inquire. Minimum length of spring balanced gate is 3' 0".



Multi-Poly Tier Support

Application - Use with skate-wheel, 1 3/8", 1.9", 2" and most powered conveyors

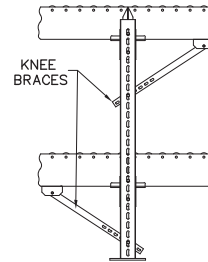
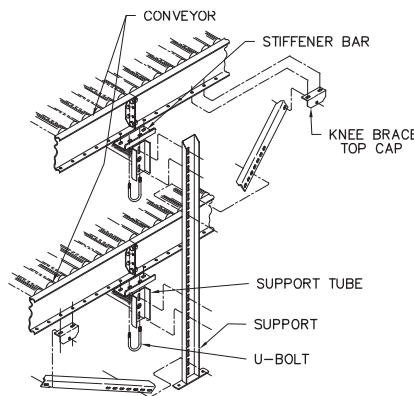
Widths - Conveyor widths to 42" wide

Capacity - 4,500 pounds capacity per set of uprights, 1,500 pounds per cross supports

Braces - Knee braces

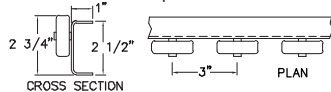
Height - 36" to 120" support height in 6" increments

Versatility - Infinite adjustability

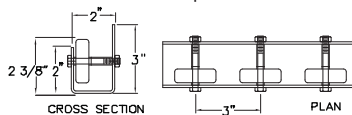


Wheel Rails

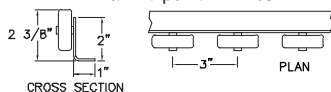
TYPE A - Rail Wt. per ft. - 2.5 lbs.



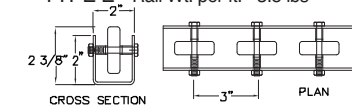
TYPE D - Rail Wt. per ft. - 3.0 lbs.



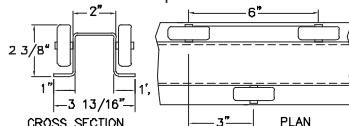
TYPE B - Rail Wt. per ft. - 2.1 lbs



TYPE E - Rail Wt. per ft. - 3.5 lbs



TYPE C - Rail Wt. per ft. - 3.5 lbs.



STANDARD SPECIFICATIONS

Frame - 12 Ga. powder painted formed HRS steel.

Load Capacity Chart

Support Centers	Maximum Load Per Foot (lbs.)				
	Type A	Type B	Type C	Type D	Type E
3'	260*	223	260*	260*	260*
4'	260*	92	233	260*	210
5'	146	50	125	198	113
6'	83	28	71	112	64
7'	51	17	44	69	50
8'	35	12	38	49	27
10'	18	6	15	24	14

*Wheel Capacity