



Manually Operated Turntable

- Capacity** - 2000 lbs.
- Rollers** - 1.9" or 2.0" diameter spaced on 3" centers
- Adjustment** - Spring-loaded foot pedal to position and lock table at 90° intervals
- Length** - 36" or 48" long
- Elevation** - 8½" minimum elevation



Ball Transfer Tables

STANDARD SPECIFICATIONS

Frames - 3½" x 1½" x 10 gauge powder painted formed steel channel with powder painted, formed channel ball mounting plates bolted in frame; or 2½" x 1" x 12 gauge powder painted formed steel channel frame with same ball mounting plates (Model BT). Also available in "drop-in" type (Model BTD) that replaces rollers in gravity conveyors. Bolts into existing roller axle holes for easy field mounting.

Balls - 1" diameter stud mounted.

Widths - From 13" between frames (B/F) and wider in two inch increments up to 27"; also 31", 33", 37" and 39" between frames.

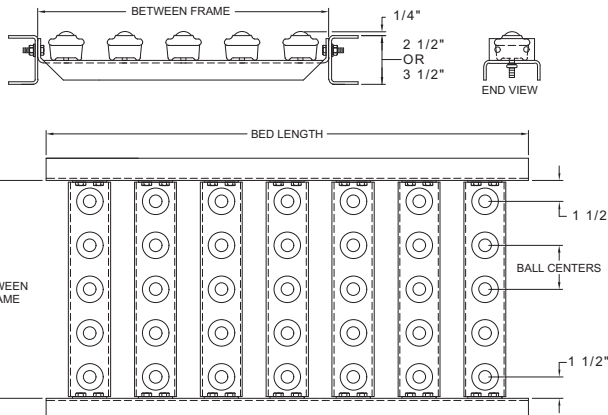
Lengths - Available 1 foot to 10 feet.

Couplings - Butt type for bolting sections together. Matches gravity conveyor.

Capacity - 50 pounds per ball transfer, 1,300 pounds maximum load with supports on 10 feet centers; 3,200 pounds maximum load with supports on 5 feet centers.

WEIGHTS

B/F Dimension	Ball Centers	Model Number	Wt. per Foot	Model Number	Weight Per Strip
13"	2*	BT-13-2	21	BTD-13-2	10
	3	BT-13-3	12	BTD-13-3	4
	4½	BT-13-4½	10	BTD-13-4½	3
	6	BT-13-6	9	BTD-13-6	2
15"	2*	BT-15-2	24	BTD-15-2	12
	3	BT-15-3	13	BTD-15-3	4.5
	4½	BT-15-4½	12	BTD-15-4½	3.5
	6	BT-15-6	10	BTD-15-6	2.5
17"	2*	BT-17-2	28	BTD-17-2	14
	3	BT-17-3	15	BTD-17-3	5
	4½	BT-17-4½	13	BTD-17-4½	4
	6	BT-17-6	11	BTD-17-6	3
19"	2*	BT-19-2	31	BTD-19-2	16
	3	BT-19-3	16	BTD-19-3	5.5
	4½	BT-19-4½	14	BTD-19-4½	4.5
	6	BT-19-6	12	BTD-19-6	3.5
21"	2*	BT-21-2	35	BTD-21-2	17
	3	BT-21-3	18	BTD-21-3	6
	4½	BT-21-4½	15	BTD-21-4½	5
	6	BT-21-6	12	BTD-21-6	4
23"	2*	BT-23-2	38	BTD-23-2	19
	3	BT-23-3	20	BTD-23-3	6.5
	4½	BT-23-4½	16	BTD-23-4½	5.5
	6	BT-23-6	13	BTD-23-6	4.5
25"	2*	BT-25-2	41	BTD-25-2	21
	3	BT-25-3	21	BTD-25-3	7
	4½	BT-25-4½	18	BTD-25-4½	6
	6	BT-25-6	14	BTD-25-6	5
27"	2*	BT-27-2	45	BTD-27-2	22
	3	BT-27-3	23	BTD-27-3	7.5
	4½	BT-27-4½	19	BTD-27-4½	6.5
	6	BT-27-6	15	BTD-27-6	5.5
31"	2*	BT-31-2	52	BTD-31-2	26
	3	BT-31-3	26	BTD-31-3	8
	4½	BT-31-4½	21	BTD-31-4½	7
	6	BT-31-6	17	BTD-31-6	6
33"	2*	BT-33-2	55	BTD-33-2	27
	3	BT-33-3	29	BTD-33-3	8.5
	4½	BT-33-4½	23	BTD-33-4½	7.5
	6	BT-33-6	19	BTD-33-6	6.5
37"	2*	BT-37-2	62	BTD-37-2	31
	3	BT-37-3	32	BTD-37-3	9.5
	4½	BT-37-4½	25	BTD-37-4½	8.5
	6	BT-37-6	21	BTD-37-6	7.5
39"	2*	BT-39-2	65	BTD-39-2	33
	3	BT-39-3	35	BTD-39-3	11.5
	4½	BT-39-4½	27	BTD-39-4½	10.5
	6	BT-39-6	23	BTD-39-6	9.5



*With balls on 2" centers, mounting strips have three(3) rows of balls.